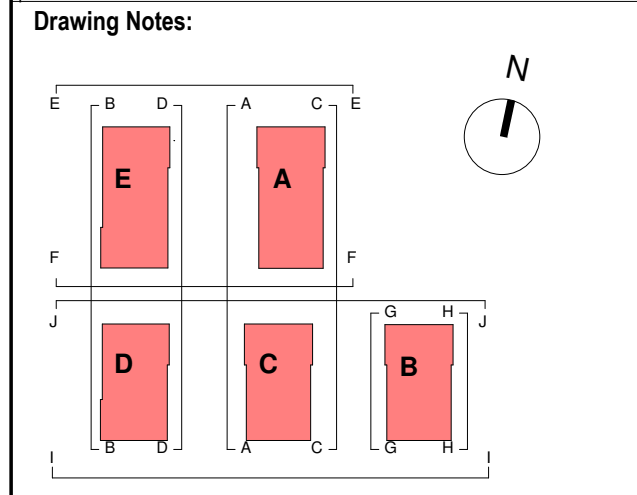


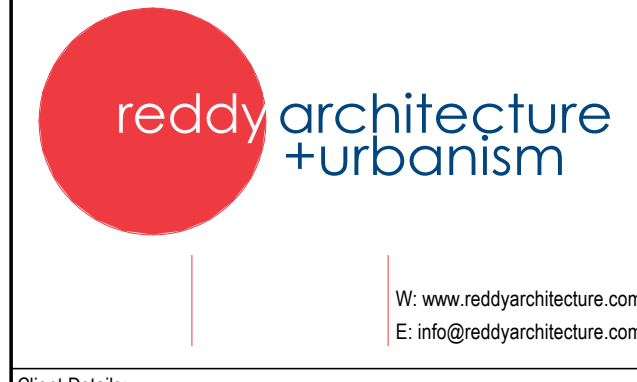
Proposed Elevation EE
1:200

Notes:
 - Do not scale from this drawing. Use figured dimensions in all cases.
 - Verify dimensions on site and report any discrepancies to the Architect immediately.
 - This drawing is to be read in conjunction with the Architect's Specification.
 - © This drawing is copyright and may only be reproduced with the Architect's permission.



KEY PLAN

Rev.	Date	Dwn	Issued for Planning	Details of Issue / Revision
P01	02/07/21	EOB	Issued for Planning	



Client Details:
 HPREF HSQ Investments Limited

Project Details:
 HSQ Feasibility
 Heuston South Quarter, St John's Rd W,
 Kilmainham, Dublin 8

Drawing Title:
 Proposed Elevations 03

Job No. P19-213D	Sheet Size: A1	Scale @A1: 1:200
Issue Date: 17/09/21	Drawn By: IOB	Reviewed By: EOB

Status	Purpose of Issue Planning Permission
Project-Originator-Zone-Level-Type-Role-Classification-Number	
RAU-ZZ-ZZ-DR-A-ELE-06203	P 01